

Phyllis Browning Company presents



123 Village Park Drive | Boerne



CHRISTIE'S
GREAT ESTATES

Another fine property offered by



Located in Boerne, this delightful community has been created by Authentic Custom Homes and offers a Homeowner's Association that maintains the exterior of each property. Inside, enjoy the quality that has made Authentic Custom Homes one of the most sought-after home builders in the Hill Country. The interior is well-appointed with exceptional finish-outs including custom cabinetry, granite counters, energy efficient appliances and areas to enjoy the outdoors. Conveniently located near shopping, the library, post office and medical care, this is an ideal location for anyone seeking a carefree lifestyle in a small city environment.

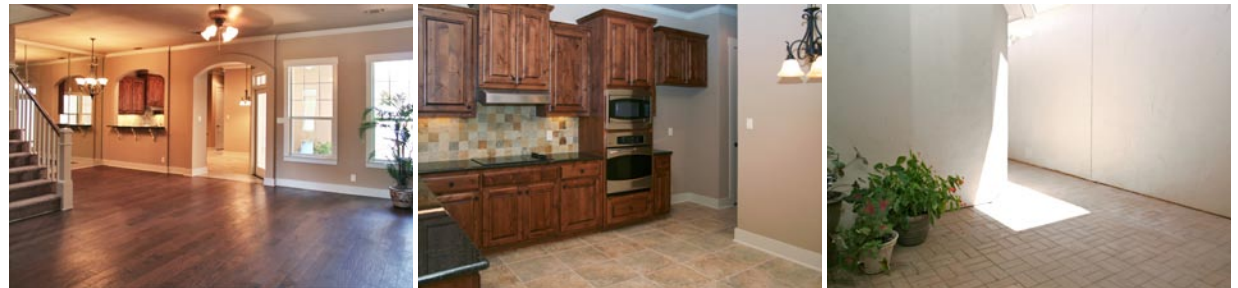
- 3 bedrooms
- 3 bathrooms
- Built in 2008
- Lot size: approximately 0.08 acres
- Boerne ISD

Interior Highlights

- Open floor plan with high ceilings
- Hardwood floors
- Spacious living and dining area
- Generous kitchen with granite counters and stainless steel appliances
- Split master suite with double vanity and garden tub
- Game room
- Energy saving packages
- High speed CAT 5 wiring

Outdoor Features

- HOA fees include exterior paint, mowing and watering
- Neighborhood garden
- Gated community
- Close to shopping, medical care and the post office



Marketed by Denise Graves
 210-698-4700 ext. 1700
 email: dgraves@phyllisbrowning.com

